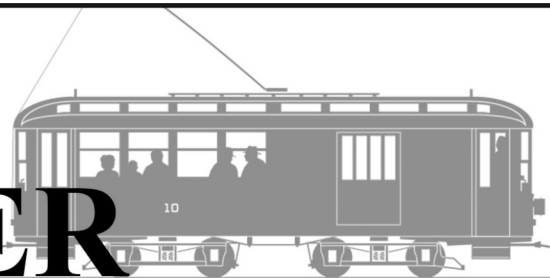

Shall we ride No.10 again next week?

Yes! It sure beats riding in our buggy!



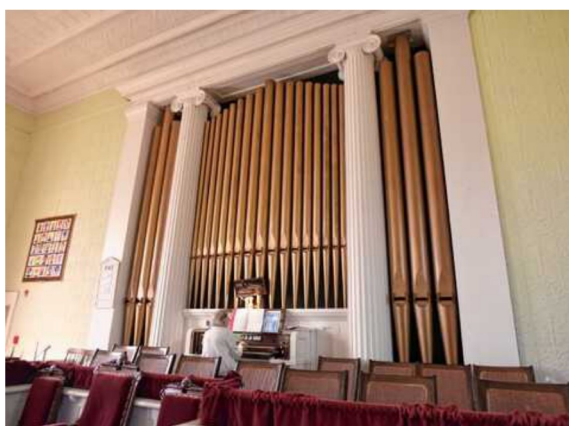
TRANSFER



VOL. 34 - NO. 2 SHELBURNE FALLS TROLLEY MUSEUM NEWSLETTER
SUMMER 2025

DEDICATED TO PRESERVING THE HISTORY OF THE SHELBURNE FALLS AND COLRAIN STREET RAILWAY

SPECIAL COMING EVENTS



J.W. Steel organ at First Congregational Church



Visitors listen to "Whistle Stop" at Trolleyfest 2019

ORGAN AND CHORAL BENEFIT CONCERT

Sunday August 3, 2025 6pm We are holding our first Benefit Concert! Several talented musicians, including Museum volunteers and friends, present an organ and choral benefit concert at the First Congregational Church of Shelburne (21 Church Common Rd., Shelburne, MA). This is a rare chance to hear the Shelburne Congregational Church's historic organ. Free-will donations will be accepted to benefit the restoration of the "Berkshire Hills" Parlor Trolley Car. The concert includes:

The Temple Israel Greenfield House Kapelye (band) performing tunes for traditional Yiddish dances and contemplation.

Sarah Schiener-Redenz will play selections on the organ by J.S. Bach, Joseph Jongen, and John Knowles Paine. Ms. Schiener-Redenz is the Organ Historical Society's 2019 - 2022 E Power Biggs Scholar.

Wayne Dixon and Eustace Benjamin Straker will perform on the organ.

The Bill Beckham Singers, a men's choir will be

singing Gospel and Spiritual music.

The organ Ms. Schiener-Redenz, Mr. Dixon and Mr. Straker will be performing on was built by the J.W. Steere & Son Organ Company in 1915. J.W. Steere & Son appears to have taken pride in this small but fairly versatile instrument, even producing a little advertising pamphlet featuring it. Beyond some minor repairs and occasional tuning this organ remains in original condition, including all leathers.

This concert will benefit the restoration of the "Berkshire Hills" Parlor Trolley Car. Refreshments, water and lemonade will be available for a donation. See

www.sftm.org/events.shtml for more concert details.

TROLLEYFEST SEPT. 27

Join us for Trolleyfest, our annual celebration of the restoration of No. 10 and all things relating to local railroad history. You can participate in hands-on demonstrations of Trolley Era activities that relate to industries and farms served by the trolley line. For our usual admission we will have spe- (cont on page 3)

DIRECTORS AND OFFICERS - 2025

Sam Bartlett (President)
Nash Bly (Vice President, Vice Chair)
Betsy Wholey Osell (Treasurer, Asst Clerk)
Lou Musante (Clerk, Asst Treasurer)
Alden Dreyer (Chair of Board)
Jim Kessler - Bill Kaiser - Jordan Helzer
Joshua Redenz - Jim Wholey
Ryan Strong - Rico Gomes

CONTACT US

Shelburne Falls Trolley Museum
PO Box 272
14 Depot St.
Shelburne Falls MA 01370
Phone: 413-625-9443
Email: trolley@sftm.org
Web: www.sftm.org

TRANSFER is a publication of the Shelburne Falls Trolley Museum Inc., produced for the enlightenment and entertainment of our members and special friends. Three issues are planned for each year. Comments, contributions, and letters to the editor are welcomed.

Sam Bartlett - Editor editor@sftm.org

PLEASE SIGN UP FOR E-TRANSFER

The TRANSFER is available online as a pdf file. This will give you the option of filing your copies of the TRANSFER on your computer, in case you want to refer back to them at some later time.

The e-TRANSFER comes out in full color!

If you wish to receive your future TRANSFERS by email, here's how to do it:

Send an email to: membership@sftm.org

In the Subject line, please enter "SFTM eTransfer".

In the body of your message please enter just your name. Future issues will come to you by email.

Please note – if you are an eTRANSFER subscriber, and subsequently change your email address, please be sure that you let us know at membership@sftm.org.

VOLUNTEERING - HOW TO DO IT

Stop by, send an email to trolley@sftm.org or call or text Sam at 413-834-0274. Indicate your interests - operating trolleys, painting, building stuff, selling tickets and gifts or what. We need you!!!

OPERATING SCHEDULE

We are open weekends and holidays through October 26. See www.sftm.org/events.shtml for Special Events.

MEMBERSHIP REPORT

At this writing, SFTM has 148 current Memberships, including 20 Life Members. If your printed TRANSFER does not have '2025' or '2100' on the address label, we hope you will renew your membership. See the Membership Form for more information on Member benefits and giving levels.

Or, renew online at www.sftm.org/join.shtml

If you get the eTransfer, please check the email that was sent with this issue to see your status.

Your support is very important to us!

Please send status questions or changes of address for mail or email to membership@sftm.org

PLEASE PATRONIZE OUR CORPORATE SPONSORS!

Floodwater Brewing
Salmon Falls Gallery
Mo's Fudge Factor
Buckland Pizza House
Blue Rock Restaurant
Hotfire Bar and Grill

Baker Pharmacy
Walter's Propane
Davenport's Service Sta.
West End Pub
Keystone Market

NEW MEMBERS

Hotfire Bar and Grill
John Howell
Michael Shaw
Phil Pless
Stephen Farley
Ryan Strong

John Cotton
Lisa Kolibabek
Nick Williams
Rachel Wang
Steve Sullivan

PROJECT TEAM

If you would like to join a hearty band of volunteers working on projects like restoration, track, maintenance etc., send me an email at sam@sftm.org. We meet once or twice a week. We can use all skill levels and will work with you to gain new skills if you wish.



The Bridge of Flowers has reopened!

Trolleyfest continued from page 1

cial activities from 11am to 5pm including:

- Speeder (aka Motorcar, aka Putt-Putt) Rides
- **Cabooses rides with our Trackmobile!**
- Velocipede demonstrations and rides
- Wooden and electric trains to play with
- Send a message via telegraph

**** Special Trolleyfest Activities 11am-3pm: ****

- Food from Mo's Fudge Factor for sale
- Music by "Whistle Stop"
- Maple products from Davenport Maple Farm
- Preserves from BarbEric Farm for sale
- Morse Code demonstrations
- Railroad movies shown throughout the day
- Quilt Sale
- Cider pressing
- Hands-on Butter making
- Blacksmithing demonstrations
- Games from 1900
- Hands-on Weaving on adult and child size looms
- Milk a 'Cow'
- Antique farm tools from Wheel View Farm
- Vinegar uses - refreshment, pickles & polishing

Updated information at

www.sftm.org/trolleyfest.shtml

HOBO JUNGLE SEPT 6.



Come learn about the lives of hobos and tramps

"Hobo Jungle, Rail Yard Bindel Sticks, & Tramp Houses.", a troupe of living history reenactors, will portray the difficult lives of early 20th century hobos and tramps. They will be camping in our Freight Yard on Saturday September 6 from 11am to 3pm.

The troupe is led by Dennis Picard who has been a museum professional in the living history field for over 45 years, with long associations to Old Sturbridge Village, Hancock Shaker Village and other New England museums. This troupe is composed of present or former museum professionals and members of the teaching profession. Expect historical accuracy,

no sad cartoon portrayals here.

The group will establish an "encampment" - called the hobo jungle - and encourage visitors to stroll through and engage with the living history reenactors to understand the lives and struggles of early 20th century transient laborers, and the ways in which towns sought to lighten their burdens. Life's challenges such as laundry, food gathering, and cooking, personal hygiene, finding work, and modes of travel are just a few of the topics this program will address. Please join us for a special offering reliving a fascinating aspect of our nation's history!

PRESIDENT'S REPORT

Sam, Jordan and Alden did several educational presentations in Greenfield, Longmeadow and Buckland, as well as appearances on WWLP and WHMP, to talk about the local history of trolleys and railroads.

The Projects crew made the yard and tracks and equipment ready for our 25th operating season. We have also been making progress on the Line Car, the "Berkshire Hills", the tamper and the trackmobile, see the Restoration Reports for more information.

We recently received several grants. We got \$3000 from Mass Bay Railroad Enthusiasts to overhaul the diesel engine on our tamper. We got \$1500 from the Amherst Railway Society for the Line Car restoration. And most excitingly, we got a \$33,000 matching grant for the Line Car, see the announcement below.

Our Board of Directors has been enhanced with the appointment of Rico Gomes and Ryan Strong. Members will vote on these appointments in February.

Kinsley Goodrich's family donated several boxes of papers related to the "Berkshire Hills" and other trolley projects of Kinsley's.

Jay Stryker has donated a welder, a milling machine and many smaller tools to help bolster our metal working and machining shop.

Ridership this year has been a bit slow, partly due to a wet start to the season, and partly due to the Bridge of Flowers being closed. But now the Bridge is open, and we can hope the weather will stay favorable, so ridership should improve.

We don't send out special fundraising mailings or have fund drives. But we do depend on your support for our ongoing operations and for our special projects. The Transfer is the only place where we ask our members for additional financial support. We need to make repairs to the trackmobile, crane and tamper,



Nash and Martin put the final touches on a "new" switch stand for Turn Out 4.

as well as to connect the 600VDC power supply.

We have an all-volunteer Restoration Crew, but the "Berkshire Hills" parlor trolley restoration project and the MBTA Line Car restoration project will be needing a lot of funds. We will make progress as funding allows, but it still helps to boost our Restoration Crew's morale to know that you, our members, have their backs. Please read the Restoration Reports herein, and go to the web pages for these projects, and then help us out with a generous donation at:

www.sftm.org/donations.shtml

Please remember to renew your Membership.

Thank you for your ongoing support!

SAM BARTLETT - PRESIDENT/EDITOR

COMING ATTRACTIONS SPEEDER DAYS



Our Central Vermont speeder, or a visiting speeder, will give rides for Speeder Days. Marie B photo

This year we are again hosting our popular "Speeder Days". On the first Saturday of each month you can come and ride a gas-powered speeder, also called a motor car or putt-putt. We will still have trolley and pump car rides. Nearby lightning or other operational issues might lead to temporary suspension.

VELOCIPED DAYS



Dick guides a young visitor on a velocipede ride.

Marie B Photo

New this year we are hosting "Velocipede Days". On the second Saturday of each month you can come and propel yourself for a short ride on a replica velocipede. A velocipede allowed one person to travel on railroad tracks for inspection of tracks or telegraph wires. We will still have trolley and pump car rides. Nearby lightning might lead to temporary suspension.

\$33,000 MATCHING GRANT FOR LINE CAR !

In June we were awarded a \$33,000 matching grant from the Massachusetts Cultural Facilities Fund for restoration of the Line Car. These grants, from the Mass Cultural Council, are for the acquisition, design, construction, repair, renovation, rehabilitation or other capital improvements or deferred maintenance of a cultural facility. To access the \$33,000, we need to raise \$33,000 of our own.

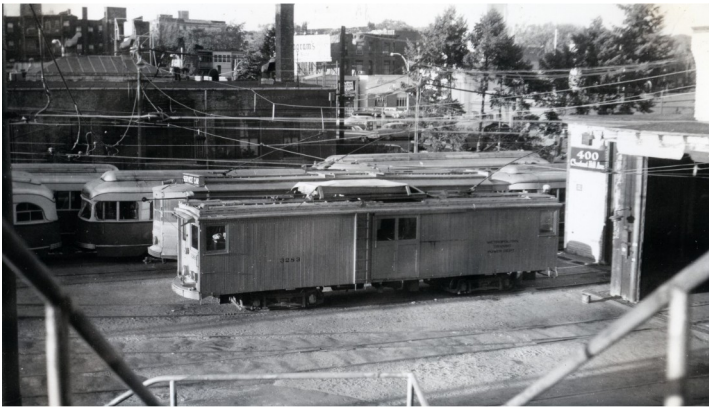
This is a lot of money for us, but we have already raised over \$14,000! That includes \$3,500 from Amherst Railway Society Grants and \$10,200 from the members of the Board of Directors. Many other members have made donations for the Line Car as well, which we can use toward the match even if they made the donation prior to the grant announcement.

So we still need \$20,000 more! Can you help us reach the goal? A restored and operational Line Car will be a useful, fun and educational addition to our collection. Please go to <https://www.sftm.org/linecar.shtml> to help us out with a generous donation.

FROM THE RESTORATION DEPARTMENT

MBTA 3283 - THE LINE CAR

Josh, Ryan, Nash, Martin, Larry, Dick and both



*MBTA 3283 at Reservoir Car House in Brookline
From the collection of Loris J. Bass*

Toms have fabricated and replaced over half of the steel frame parts that needed replacement on the Line Car. They have also removed most of the brake rigging and started cleaning, prepping and painting these parts. A few brake parts need to have holes re-bushed, and many pins and bolts will get replaced but mostly it just needs paint and lubrication to be functioning brake gear again. But that is just the beginning.

If you would like to contribute to the restoration of this unique piece of Boston transit history, we encourage you to make a donation to the Line Car Fund. See www.sftm.org/donations.shtml for donation details, or read about our Line Car at www.sftm.org/linecar.shtml.

THE "BERKSHIRE HILLS"

We created a display of pictures of the "Berkshire



*"Berkshire Hills" on a Berkshire County tour 1903
collection of Kinsley Goodrich/SFTM*

Hills" and a drawing of the floor plan and mounted this information on the side of the car so that our visi-

tors can come into the Car Barn and see what it looks like now and what we hope it will look like again.

We have already received a \$10,000 donation to cover part of the costs of moving the "Berkshire Hills". We will continue to have expenses with this project. Our restoration progress will be largely dependent on the donations we receive for the "Berkshire Hills" Fund. If you would like to support the restoration of this unique piece of Berkshire Street Railway history, please make a donation to the "Berkshire Hills" Fund. See www.sftm.org/donations.shtml for donation details, online or by check

We have posted some new pictures and information on the "Berkshire Hills" on its webpage at www.sftm.org/berkshirehills.shtml.

There is plenty of work to do on the "Berkshire Hills". If you want to help out by scraping, cleaning, priming, painting or rebuilding wooden parts, please email Josh at josh@sftm.org or call (413) 682 4591.

RESTORATION VOLUNTEERS NEEDED!

If you would like to support our restoration efforts by volunteering, please email Josh at josh@sftm.org or call (413) 682 4591.

2025 MEMBERSHIP RENEWALS ARE DUE!

2025 Memberships are now due! If your printed TRANSFER does not have '2025' or '2100' on the address label, we hope you will renew your membership now. See the attached Membership Form for more information on Member levels and benefits.

Or, renew online at www.sftm.org/join.shtml

If you get the eTransfer, check the email that was sent with this issue to see your Membership status.

Your membership dues is very important to our financial well-being, any time of year. We also depend on donations above your dues amount to fund our ongoing Projects, like the "Berkshire Hills" and the Line Car. Please consider a *generous* additional donation with your Membership.

SFTM EMBROIDERED CLOTHING

If you have been to the museum recently, you may have noticed that many of our volunteers are sporting spiffy shirts, vests and other apparel with the SFTM logo embroidered on them.

Now non-volunteer members can have access to the same items! To learn more, email Betsy at Betsy@sftm.org

"BERKSHIRE HILLS"

\$20,000 parlor car of

THE BERKSHIRE ST. RY. CO.

R. M. Sawyer, CCC Camp S-93, Becket, Mass.

*An undated report from the
Civilian Conservation Corps*

*From the collection of
Kinsley Goodrich, transcribed by
Sam Bartlett
original at
www.sftm.org/berkshirehills.shtml*

The "Berkshire Hills" arrived at the East St. carhouse connection siding with the Boston & Albany, June 12, 1903. Built by WASON. Double-truck closed car.

Weight -----25,500 lbs.
Length overends ----- 45 ft. 8 in.
Length, including buffers ----- 46 ft. 6 in.
Trucks ----- Wason No. 20 heavy

Exterior is painted U. S. Mail White, with buff trimmings, gold striping and lettering.

Trucks are painted green; roof a light drab.
Upper window panes embossed with gold lines and figures.
Windows of plate glass. Wagenthals headlight.
Christenson air pumps. Air brakes.
Car operated by the type M multiple unit system.

The interior finish is of solid San Domingo mahogany. Two handsome buffets are placed at each end of the car with all the divisions requisite for parties. A large ice-box with access through traps in the floor will carry supplies. A water cooler and 3 beveled edged mirrors are incorporated in the side walls near the center of the car; The mirrors are in hinged frames, which, when opened reveal places for glassware.

There are no vestibules. The motorman is curtained off with double-faced velour draperies. Interior of roof is of empire style with grained arches, painted golden yellow, divided into 3 parts, with 4 cloister lamps in the center of each division. The balance of the 50 lamps are spaced under the deck sash openings on each side, partly concealed by the moldings. The deck glass is chipped, and of special patterns. The plate glass windows are adorned by heavy brocade curtains of the richest quality obtainable. Heavy, dark blue drapery hangs at each window, and may be so arranged as to form compartments in the car. Between all windows are mirrors, whose edges are many-bevelled. The 28 individual wicker chairs are upholstered with costly tapestry. The aisle runner is a soft Wilton carpet in harmonious colors and design. On a carved mahogany desk to the left as one enters, is a registry book in which the names of all who ride on this car may be written.

A small master controller inside of the car regulates a set of 15 magnetically operated contactors under the car, which gradually applies current to 4 50 h.p. Motors and also provides for rapid acceleration. The reversing switch is under the car, together with all the electrical parts. Cutout switch is provided so that any or all motors can be cut out independently. The car has 32 heaters. 3500 feet of wiring is used.

Beginning Wednesday, August 26th, the parlor car will be run on regular trips between Pittsfield and Cheshire and return; then to Great Barrington and return. These trips will be run every Monday, Wednesday and Friday until further notice. A double fare will be charged to the public.

PLEASE JOIN US FOR OUR SPECIAL EVENTS!

ORGAN AND CHORAL BENEFIT CONCERT SUNDAY AUGUST 3 6pm - 8pm

at the First Congregational Church of Shelburne-
21 Church Common Rd., Shelburne Center
NOT in Shelburne Falls

This is a rare chance to hear the Shelburne Congregational Church's historic organ. Free-will donations will be accepted to benefit the Museum's ongoing projects, including the restoration of the "Berkshire Hills" Parlor Car. More concert details on page 1 or sftm.org/events.shtml for directions.

TROLLEYFEST 2025 SATURDAY SEPT 27

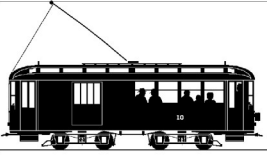
Trolley rides, pump car rides, speeder rides, velocipede rides, CABOOSE rides from 11am-5pm

Special Hands on activities from 11am-3pm

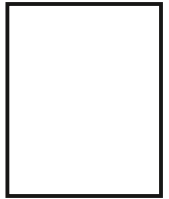
Explore the life of rural Shelburne, Buckland and Colrain residents from the early 1900's.

Regular tickets \$5 adult, \$3 6-17 yo, under 6 free.
More details on page 1 or sftm.org/trolleyfest.shtml

Shelburne Falls Trolley Museum
PO Box 272
Shelburne Falls MA 01370-0272



413/625-9443 www.sftm.org



If your address label does not say '2025 or '2100' please renew your Membership today.

See the included Membership Form, or renew online at

www.sftm.org/join.shtml.

Please consider getting your Transfer online, see Page 2 for eTRANSFER details.

You can visit our FaceBook page at

www.facebook.com/ShelburneFallsTrolleyMuseum/

SPECIAL EVENTS COMING!

See inside for all the details on our

Benefit Organ and Choral Concert Sunday Aug 3
and, of course, **Trolleyfest 2025**, Saturday Sept 27.

THANKS FOR THE HELP!

Thank you to Marie and Bruce for contributing to this issue. To submit an article, picture or idea for the Transfer, please email editor@sftm.org.

MUSEUM RECIPROCITY

A group of trolley museums has formed a Member's Reciprocity Program. Current SFTM members get a discount at participating museums.

See what museums are participating at www.trolleywayfinder.org/. Bring your membership acknowledgement letter or membership card.

TRANSFER AVAILABLE ONLINE

If you only get the printed version of the Transfer and want to see the pictures in color, or want to look at back issues, go to:

www.sftm.org/transfer/full/

GIFT MEMBERSHIPS!

Did you know you can give an SFTM Membership as a gift? Just write the lucky person's name and address on the membership form, check the Gift box and include your check.

TRANSFER INDEX AVAILABLE

Nina has volunteered to create an index of Transfer articles. We still need to do the early issues for which we only have paper copies. You can download the index from

www.sftm.org/transfer/transferindex.xls to make it easier to find old "news" about our museum, and local railroad history. We have been publishing Transfer newsletters for thirty-four years!

EDITOR'S NOTES

I tend to only use first names, because the Transfer is posted online and some folks prefer not to have their names splashed all over the web.

Feedback is always welcome.

Sam Bartlett- editor editor@sftm.org